



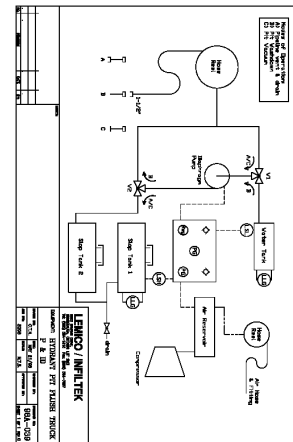
# Hidrante Pit Cleaner

**SSSI Aviation** Hydrant Pit Cleaner are designed for efficiency and safety they Meets 100 % fueling service and system requirements. Design allows for flexibility and easy expansion, equipped with the latest technology and the size are according with the client needs

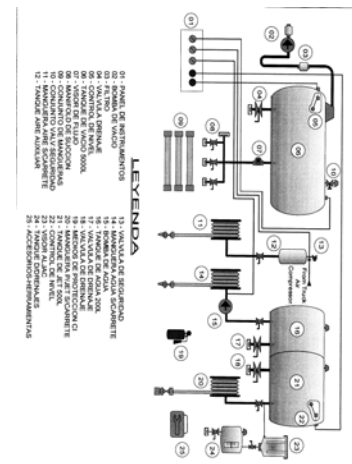
Our **HPC** are servicing, flushing / cleaning; hydrant pits and system low points . The unit has Slops tank, to pick out the water or fuel from flush hydrants and system Low Points t, a Water tank with pump for pressure washing / flushing hydrant pits or valves registers , Vacuum tank take all dirt water and mix fuel from hydrants pits, and replacement , repair of heave staff like valve or hydrant pits and pumps



*Model SLCLH-450- S*



*Model SLCLH-2740-ACF*



ITEM	DESCRIPTION
pipe	Alum.SB2416061-T6 or ss 316
Flange	Alum.SB2416061-T6 o ss316
Hose	API-1529 last edition
Sensor lines	Material AISI 316 (0.036" wall thickness) Fittings de compression con doble ferrule
Fittings	NPT aluminum
bolts	UNC, Material ASTM A193 B7 & ASTM A194 2H
gasket	Buna or teflón
Interconnection pipe and vessels	ASME Boiler Pressure Vessels and Piping Code CSA Standard B51, Boiler, Pressure Vessel and Piping Code
Weld	WPS Standard for overlap welds - WPS Standard for butt welds
Test NDT	100% Visual 100% Gamma Radiography SS1777 () Aceptación acorde a ANSI B31.3
Pressure test frame	All system 1,5 work pressure x 1 h., Carbon steel ASTM A36
Electric	Acorde a Canadian Electrical Code

### Option Module

- **A) Safety features** include Brake Interlock (vehicle immobilisation) System, Emergency Interlock Over-ride and Emergency Stop / Shutdown buttons, roll-over sensor and engine strangler. Many more safety .
- **C) Operated crane** is mounted at the rear right corner of the vehicle to facilitate lifting of pit valves etc..
- **G) Covering / panelling** of operating station, made from aluminium, as weather protection, including roof and big lateral lockable flap which can be opened upwards under gas tension for the operation station.
- **F) Cabinet** for quality control equipment.
- **Dumptank** of aluminium, capacity approx. 60 l, to collect sense- /depressurisation and sampling fuel, with bottom sloping to the lowest point equipped with flanged inspection cover; vent opening with flame trap filling stub/funnel for sample fuel with strainer and cap; level indicator; drain ball shut-off valve 1" at the lowest point with drain line, terminating in a screwed connection 1" with cap.

**S ) standart**

## Main Functions

- Hydrant Low Point Flush
- Hydrant Pit Cleaning with water
- Hydrant Pit cleaning Vacuum / suction system
- Hydrant drying with air pressure
- Transfer pumping system

The vehicle has low-point flushing into the main slops tank, a vacuum pumping system, a stand-alone transfer Pump and high pressure water and air reels. In addition to the flushing and vacuum systems, an hydraulically All pneumatics are supplied by the compressor installed behind the cab and the hydraulic system pump is driven by a PTO on the vehicle transmission. Automatic depressurization of the system occurs when all Interlocked fuelling components are stowed. Safety features include Brake Interlock (vehicle immobilisation) System,

## **OPERATION MANUAL / SPARE PARTS**

following literature in English or Spanish language in three-fold

Operating instruction manual including set of drawings, maintenance manual and parts list for all major components

Spare parts will be available for a minimum period of ten years after delivery of the module .

## HOW TO ORDER

### Model

SL CLH - 2740- CS

*SSSI-Lemico*  
Pit cleaning  
vehicle

Volume  
Máx  
Slop tank

Clients  
Options  
Needs

### Our serial number

J 000 - 000- 0

Year Frabric.

Orden  
tracking